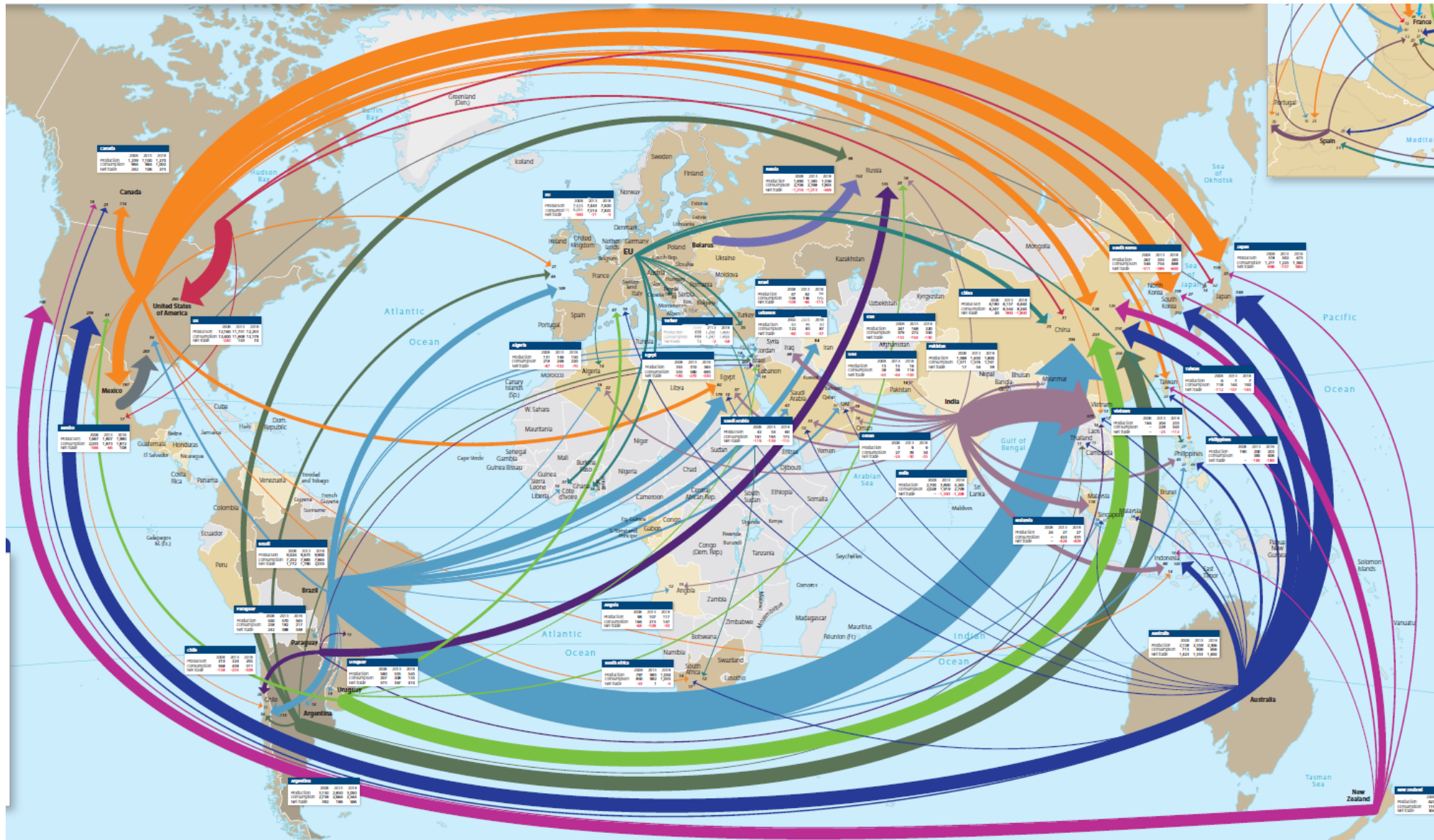


Sustainable Agriculture and Trade

A Deep Dive Roundtable

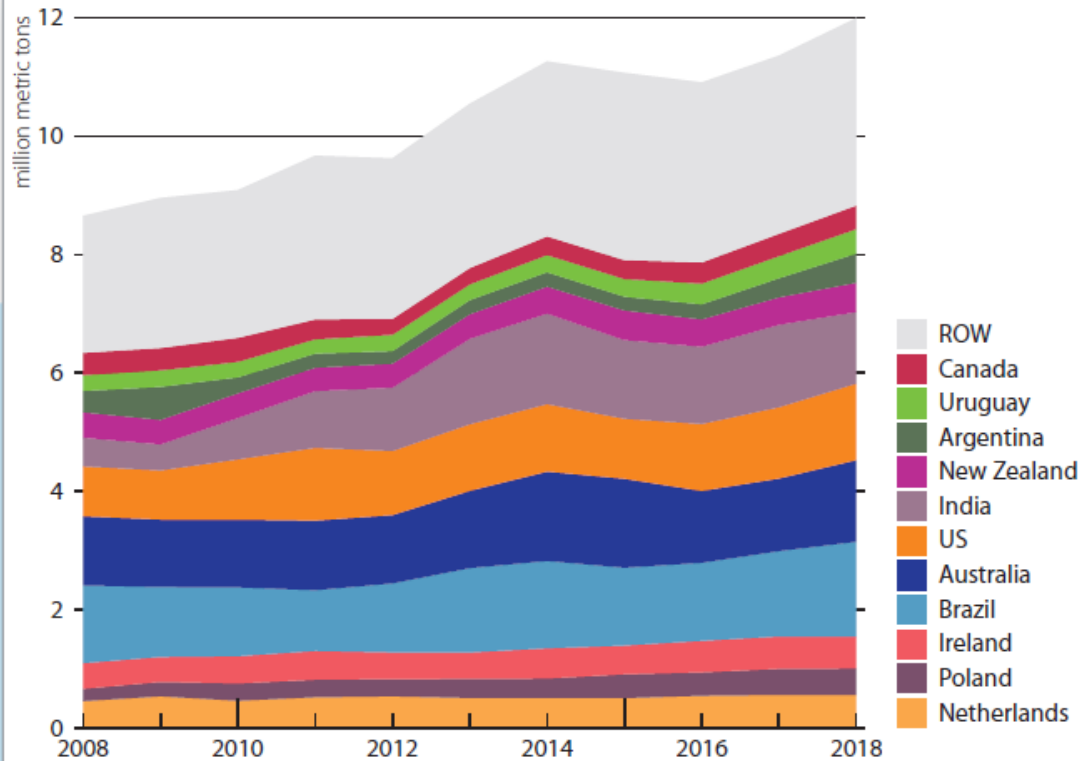
Session 3: Focus on key commodities
Bovine meat

Mariana Bombo Perozzi Gameiro, Independent consultant

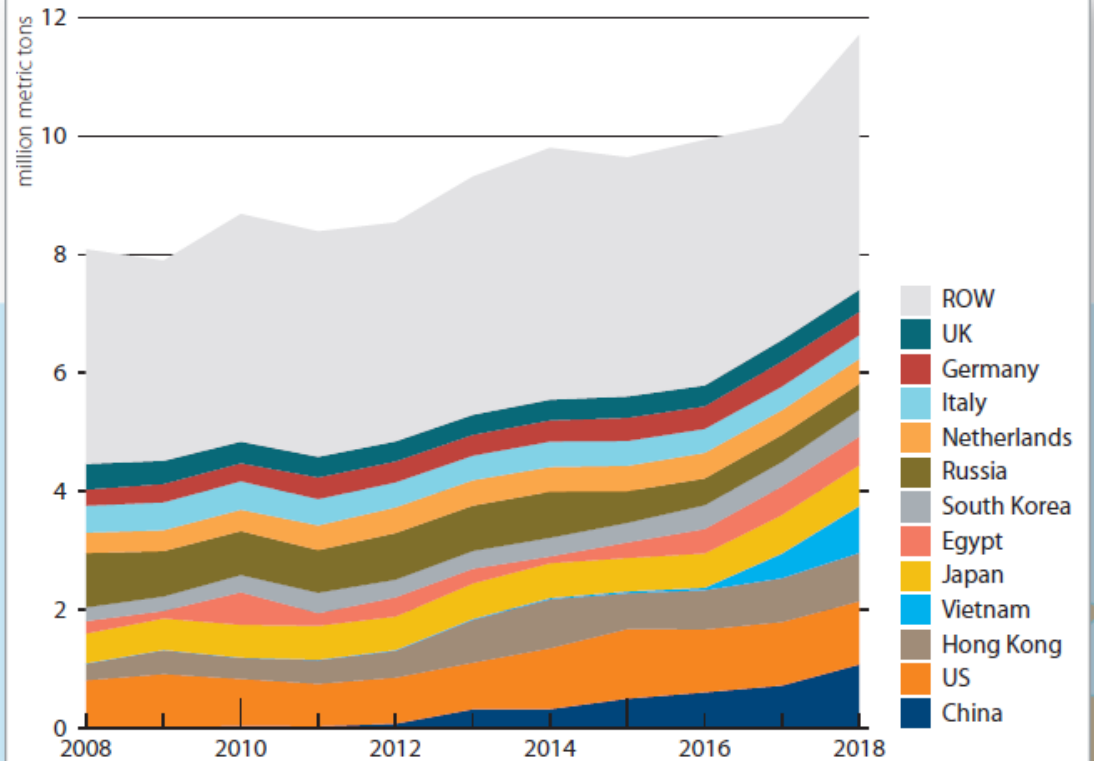


Source: Rabobank World Beef Map 2019. <https://research.rabobank.com/far/en/sectors/animal-protein/world-beef-map-2019.html>

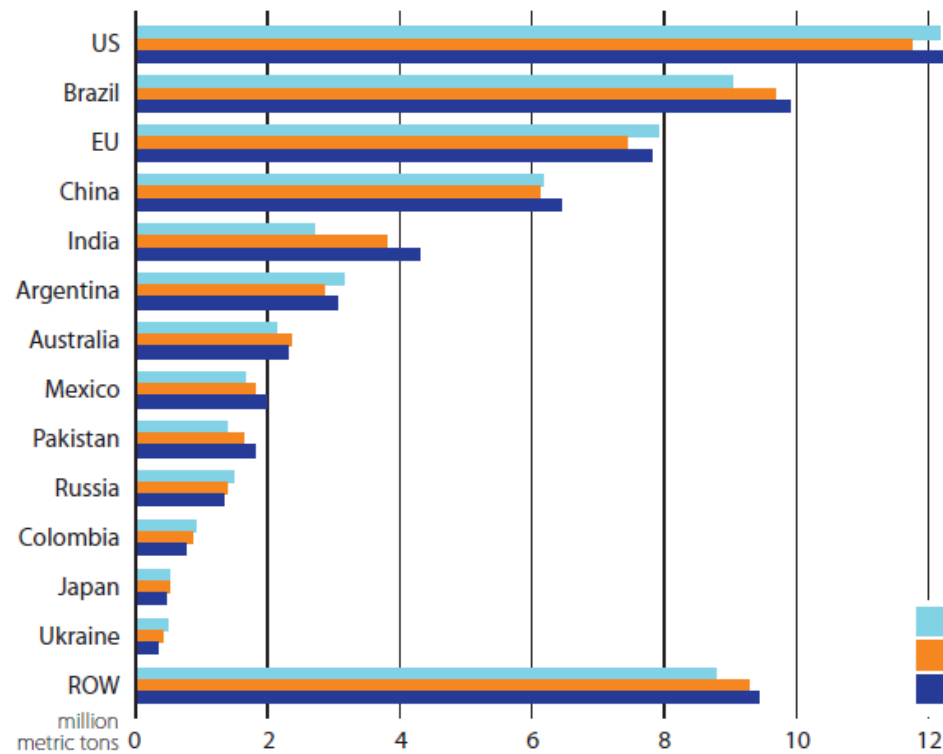
Global Beef Exports, 2008-2018



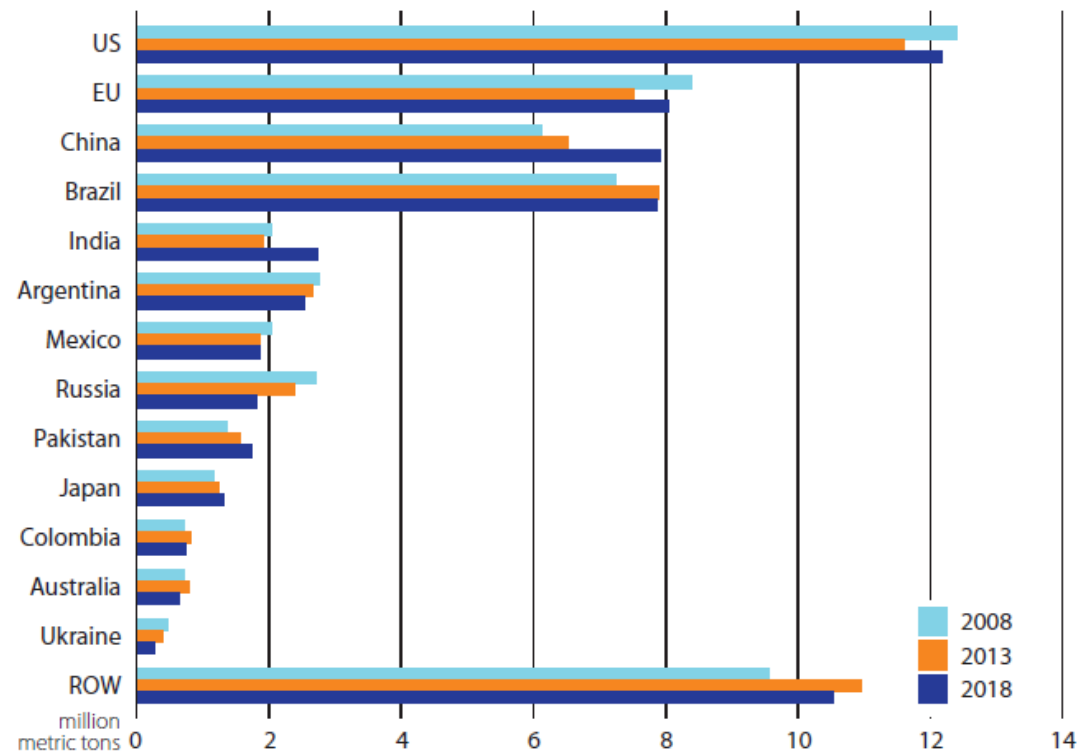
Global Beef Imports, 2008-2018



Beef Production, 2008-2018

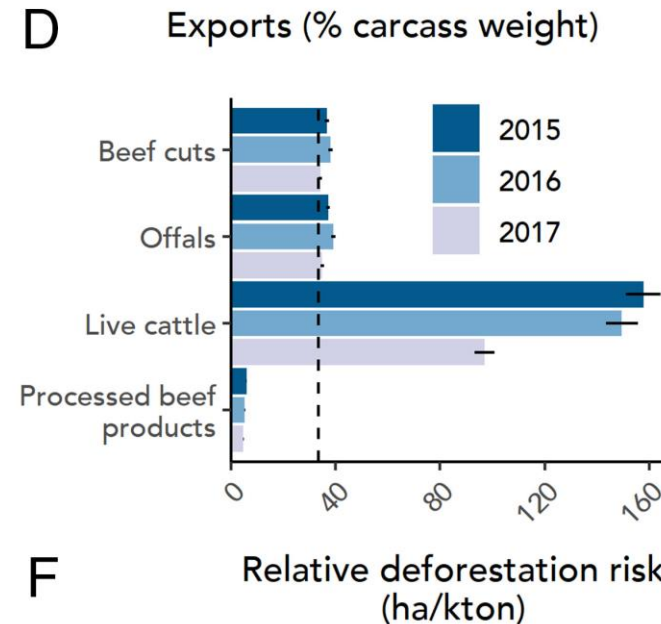
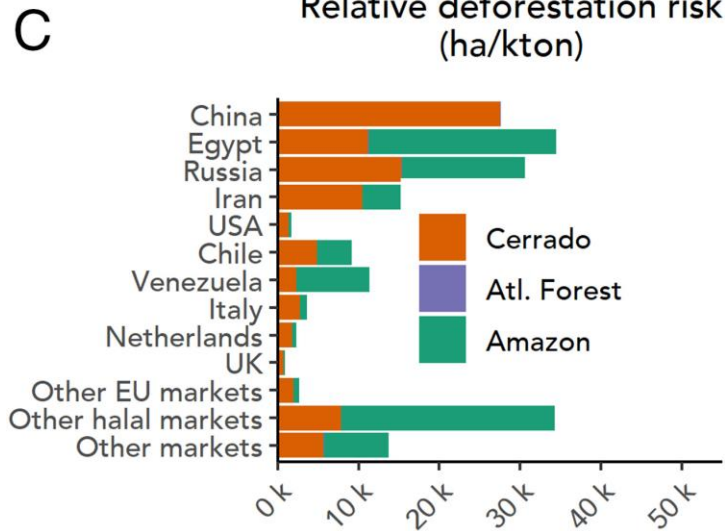
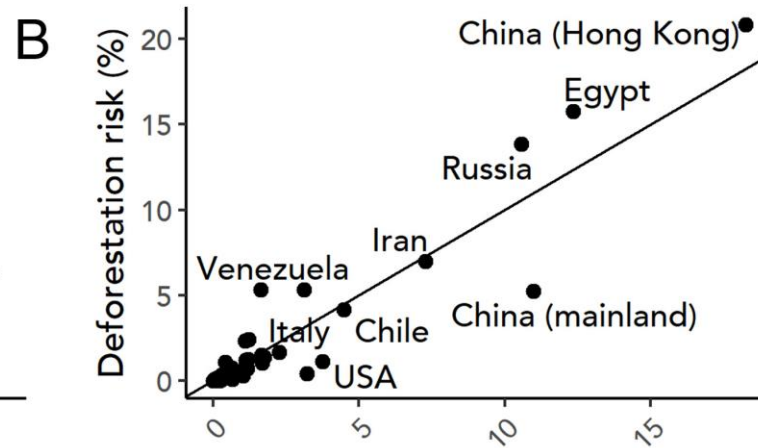
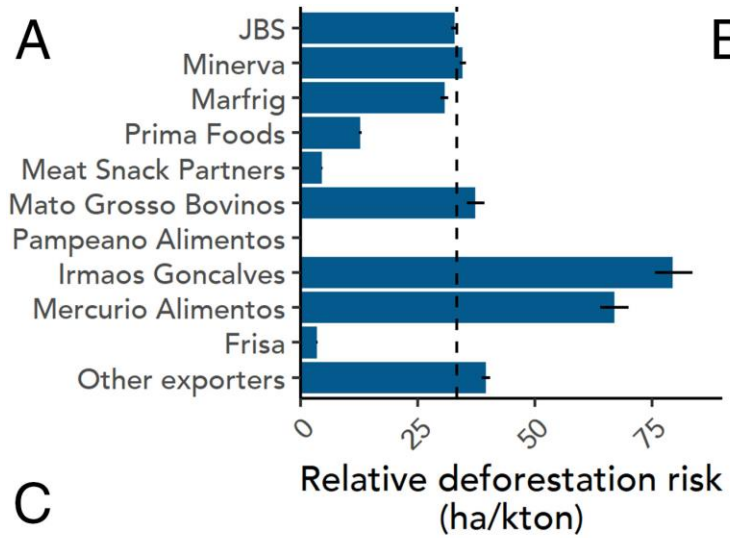


Beef Consumption, 2008-2018



Trade and sustainability

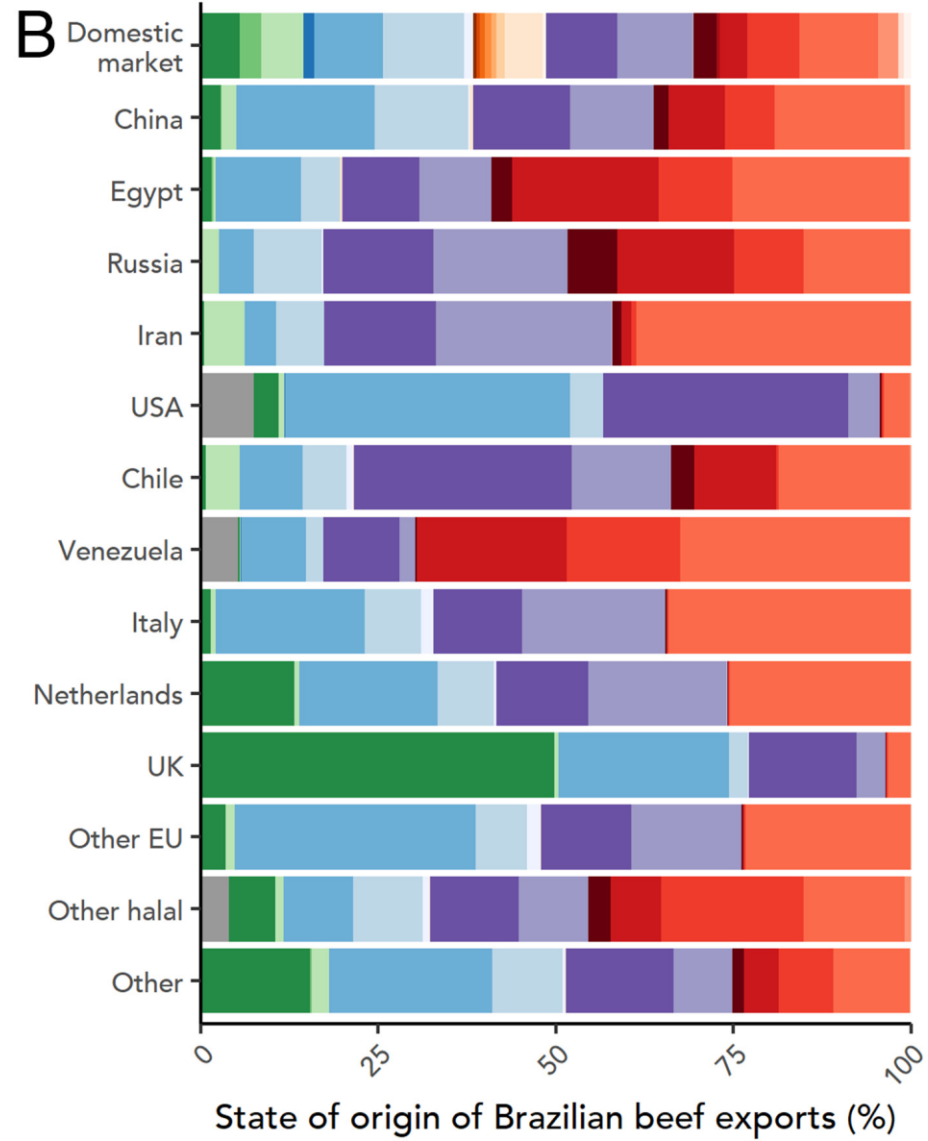
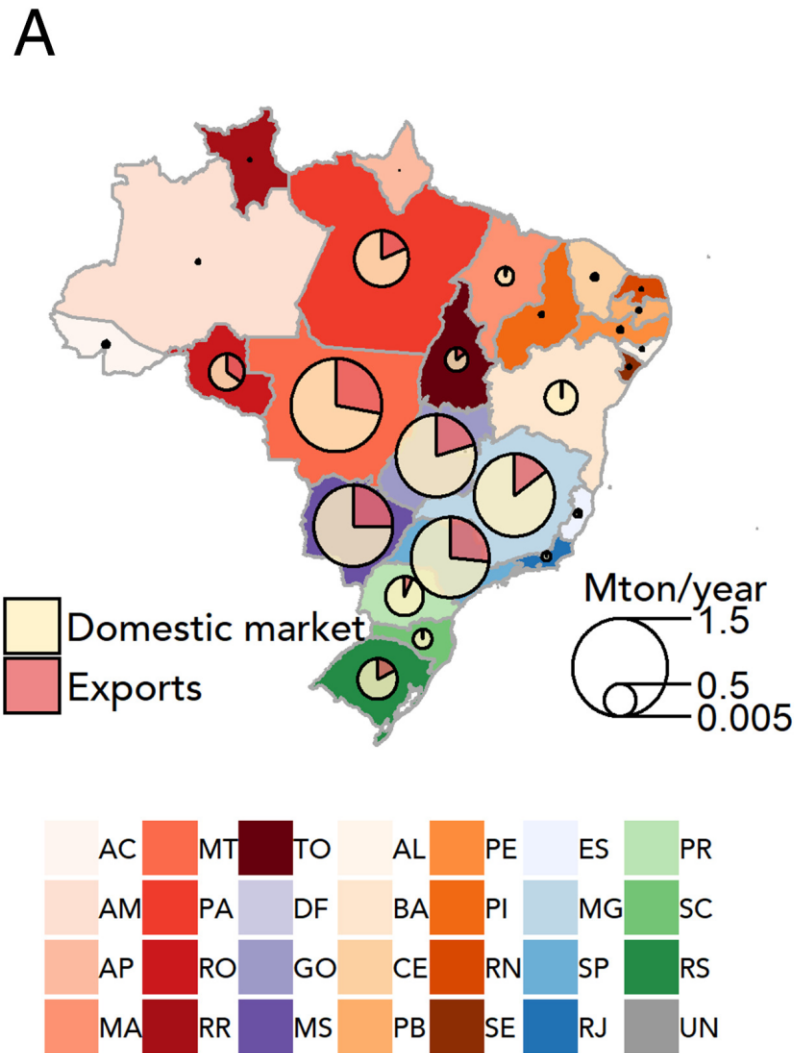
- Global beef trade will continue rising over the next years, driven by strong consumption growth in Asia
- With increased trade, comes increased exposure and increased challenges, as:
 - geopolitical tensions
 - biosecurity risks
 - and the increasing use of non-tariff barriers
 - embedded social and environmental problems



E

F

The deforestation risk of different actors' purchases of Brazilian beef. (A) The relative deforestation risk of major exporters. (B) The deforestation risk of major markets (as a percentage of all export-associated deforestation risk), plotted against their market share (% of exports). (C) The deforestation risk of major markets (2015 to 2017) in the Amazon, Cerrado, and Atlantic Forest biomes. (D) The relative deforestation risk of different products—live cattle exports carry a disproportionately high risk.



The origin and destination of Brazilian beef. (A) Cattle production (Mtons/year) and the proportion exported per state in Brazil, shown for 2017. (B) Breakdown of the origin of sourcing per major market.

Which measures can be taken to help minimize the impacts and build sustainable beef trade flows?